

VIETNAM DAILY

[Market Commentary]

The VN-Index continued its downward trend like Asian stock markets given inflation fears in the wake of China's new Covid lockdowns

[Futures/ETFs]

Futures contracts dropped following the movements of the VN30-Index

[Market Movers]

POW, LTG

April 15, 2022

	Index	Chg (%, bp)
Ho Chi Minh	1,458.56	-0.92
VN30	1,493.74	-1.60
VN30 futures	1,492.60	-1.32
Hanoi	416.71	-1.65
HNX30	743.46	-2.17
UPCoM	112.36	-0.93
USD/VND	22,900	+0.00
10-yr govt bond (%)	3.01	+4
Overnight rate (%)	2.09	+9
Oil (WTI, \$)	106.95	+0.00
Gold (LME, \$)	1,974.43	+0.04



Market Commentary

VNIndex 1,458.56P (-0.92%)
Volume (mn shrs) 659.5 (+40.7%)
Value (U\$m) 945.7 (+17.0%)

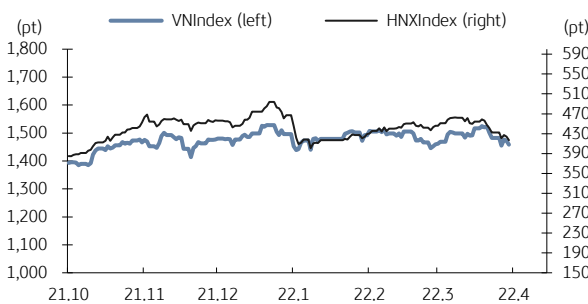
HNXIndex 416.71P (-1.65%)
Volume (mn shrs) 70.2 (+23.2%)
Value (U\$m) 93.0 (+25.6%)

UPCoM 112.36P (-0.93%)
Volume (mn shrs) 78.7 (+110.6%)
Value (U\$m) 48.4 (+39.6%)

Net foreign buy (U\$m) +4.8

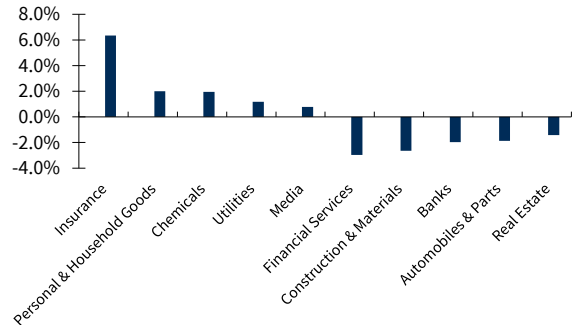
The VN-Index continued its downward trend like Asian stock markets given inflation fears in the wake of China's new Covid lockdowns. Oil prices declined for the second week after the International Energy Agency (IEA) lowered its forecast for global oil demand by 260,000 barrels per day this year due to China's dwindling demand, dragging down oil and gas stocks PV Technical Services (PVS, -1.6%), PV Drilling & Well Services (PVD, -0.2%). Seafood stocks Nam Viet Corporation (ANV, +7%), Vinh Hoan Corporation (VHC, +1.9%) rose, unlike the general market, since pangasius export processing enterprises in the Mekong Delta reported on rising export prices thanks to favorable conditions. Foreign investors were net buyers, focusing on Viettel Post (VPB, -2.5%), Vietinbank (CTG, -0.6%), and PV Fertilizer & Chemicals (DPM, -2.1%).

VN Index & HNX Index



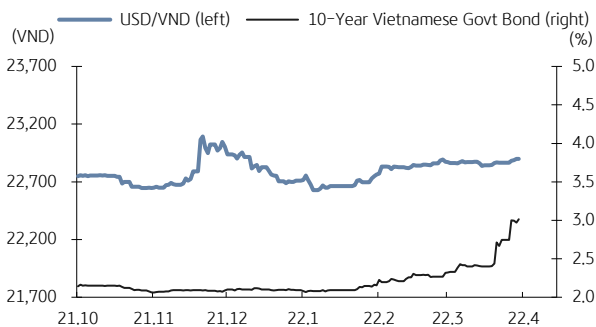
Source: Bloomberg, KB Securities Vietnam

VN Index sector performance



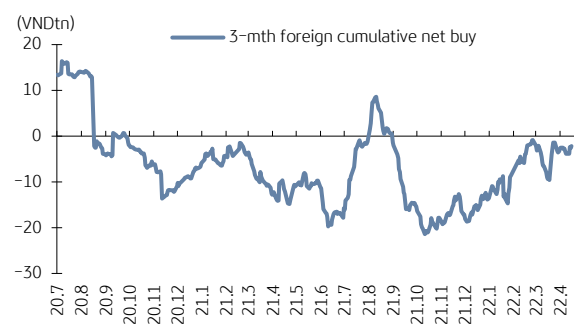
Source: Bloomberg, KB Securities Vietnam

USD/VND & 10-year government bond rates



Source: Bloomberg, KB Securities Vietnam

Vietnam - 3-mth cumulative net foreign buy



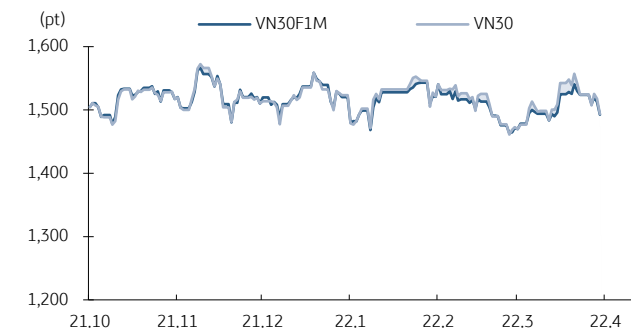
Source: FiiPro, KB Securities Vietnam

Futures/ETFs

VN30	1,493.74P (-1.60%)
VN30 futures	1,492.6P (-1.32%)
Open	1,511.8P
High	1,517.4P
Low	1,492.6P
Contracts	169,195 (+30.6%)

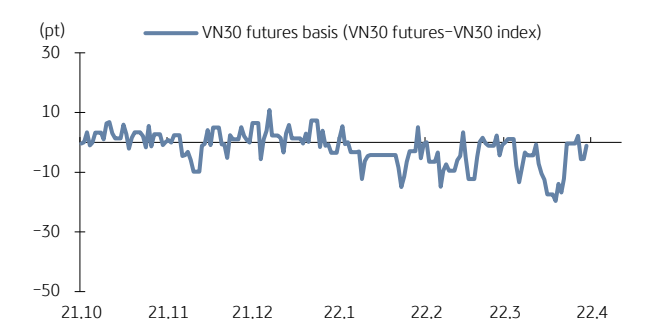
Futures contracts dropped following the movements of the VN30-Index. The basis opened at -6.51 bps, then narrowed down and fluctuated around -0.29 bps before closing at -1.14 bps. Foreign investors were net sellers today with a sharp increase in market liquidity.

VN30 futures & VN30 index



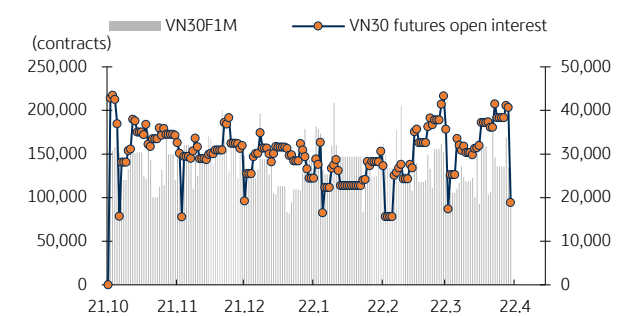
Source: Bloomberg, KB Securities Vietnam

Front month VN30 futures basis



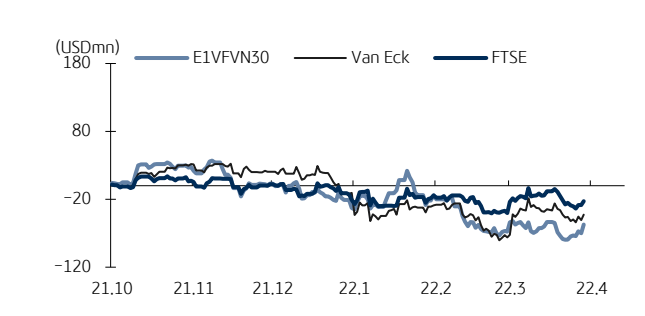
Source: Bloomberg, KB Securities Vietnam

VN30 futures volume & open interest



Source: Bloomberg, KB Securities Vietnam

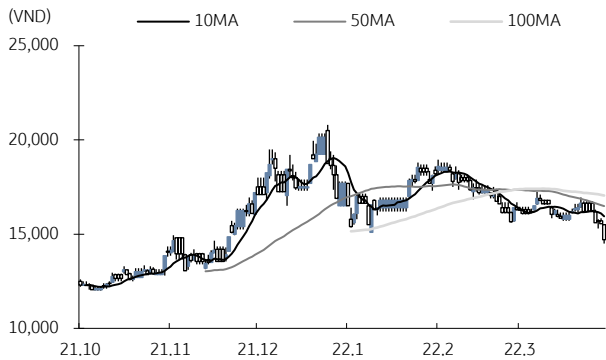
Vietnam ETFs - 3-mth cumulative net buy



Source: FiinPro, KB Securities Vietnam

Market Movers

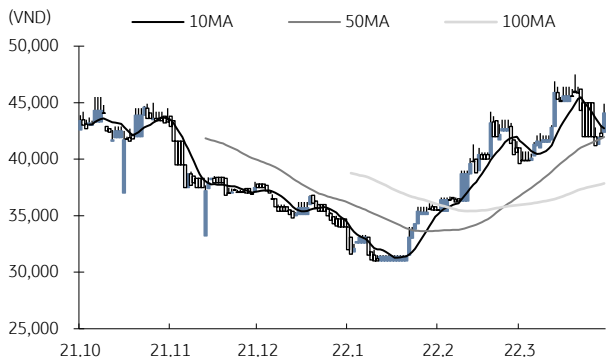
PV Power (POW)



Source: Bloomberg, KB Securities Vietnam

- POW closed down -5.47% to VND14,700.
- POW disclosed the business plan in FY22 with NPAT of VND743 billion (-63.7% YoY) on revenue of VND24,242 billion (-4.1% YoY), equivalent to 13.9 billion kWh in electricity output. The company would invest in the Quang Ninh mixed gas turbine project, Ca Mau 3 gas power project, Nam Du LNG terminal, and continue developing LNG-to-power and renewable energy projects.

Loc Troi Group (LTG)



Source: Bloomberg, KB Securities Vietnam

- LTG closed up 4.01% to VND44,100.
- LTG targets NPAT of VND400 billion (-4.3% YoY) in FY22, planning to pay dividends at 25% in 2022 and 30% in 2023. The company would make a private placement of 10 million shares or 12.4% of outstanding shares, thereby raising the charter capital from VND806 billion to VND906 billion.

KBSV Model Portfolio

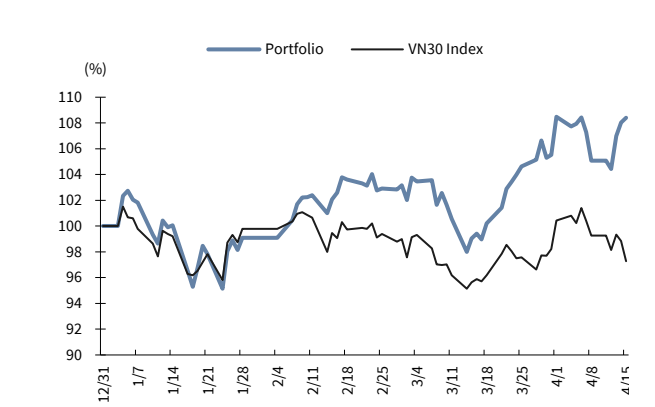
KBSV Research Team

Investment approach:

- Seeks to outperform the VN30 Index by identifying the most attractive stocks within our coverage universe over the next 3 months
- Employs a risk-managed exit strategy that sets a profit target of +30% and stop loss of -15%
- Uses an equal-active-weight (with monthly rebalancing method) approach that allocates 100% of the portfolio to stocks that, at times, can include a VN30 index ETF

	VN30 Index	Master Portfolio
Daily return	-1.60%	0.35%
Cum. return	-2.73%	8.41%

Performance vs VN30 Index



KBSV domestic model portfolio

Ticker	Inclusion date	Close 22/04/15	Daily return (%)	Cumulative return (%)	Main investment catalysts
Mobile World (MWG)	19/08/09	160,200	0.4%	107.3%	- Optimizing revenue from DMG & TGDD chains - BHX expects to reach break-even point soon at stores and distribution centers - In the long term, BHX aims to capture 10-15% of the food retail market
PVFC Co (DPM)	22/03/04	70,700	-2.1%	17.2%	- Fertilizer prices continue to remain high with limited supply, while domestic demand recovers - Healthy financials, highest ROE in the industry
Phu Nhuan Jewelry (PNJ)	19/03/22	117,100	0.1%	52.8%	- Strong topline supported by transaction volumes (2018 +34% & ASPs (2018 +5%) - Strongest customer base to capture lucrative watch segment (5% of sales by 2022E) - Core business activities growing again after the "ERP" incident
Nam Tan Uyen (NTC)	21/11/11	207,000	0.0%	7.8%	- NTC-3 is expected to be the main growth force in 2022 - Positive long-term outlook for industrial park industry - Healthy financial structure
Refrig Elec Eng (REE)	18/10/11	87,000	6.1%	155.9%	- Office lease management & E-town Central occupancy generates stable cash flow - Strategic investments in utility industry provides stable/long-term dividend stream
FPT Corp (FPT)	18/09/06	115,000	-1.4%	295.0%	- Software outsourcing foothold in Japan/US/Asia-Pacific/EU drives 25% overseas CAGR - Telecoms stable 15% growth/solid subscriber growth & profitable Pay-TV from 2020E - 20%+ earnings momentum by 2020E
Vietin Bank (CTG)	20/01/31	31,000	-0.6%	64.0%	- Building on strong earnings recovery in 2019 & optimistic outlook for 2020 - Growing expectations for capital increase in 2020 to offset loan-growth concerns - Already improved asset quality and benign credit risks for 2020
PV Gas (GAS)	20/12/11	115,100	3.1%	56.8%	- Gain benefit from growing LNG demand - Expectation on global oil price recovery - Attractive valuation
Hoa Pha Group (HPG)	19/12/04	44,200	-1.6%	205.3%	- Steel consumption starts to rebound - Construction steel prices show signs of rising again - Increased capacity from Dung Quat project helps HPG expand market share
Kinhbac City Development (KBC)	20/03/09	50,600	-0.6%	269.3%	- Strong pricing for upcoming land sales after Trang Due urban land sales in 4Q19 - Beneficiary of more production facilities from EU companies after EU-Vietnam FTA - Re-location of supply chains from China after COVID-19 scare

Source: Bloomberg, KB Securities Vietnam

Market Monitors

Ho Chi Minh – Net foreign buys/sells

Ticker	Chg (%)	For. own (%,-1d)	Net buy (VND bn)
VPB	-2.5%	17.5%	75.6
CTG	-0.6%	25.7%	64.1
DPM	-2.1%	11.3%	55.4
CII	2.1%	11.0%	53.1
GEX	-5.7%	8.5%	45.5
Ticker	Chg (%)	For. own (%,-1d)	Net sell (VND bn)
HPG	-1.6%	21.9%	-187.3
SSI	-4.8%	37.6%	-71.6
VND	-2.5%	18.2%	-22.3
TPB	-4.4%	29.9%	-32.7
YEG	1.7%	20.9%	-28.9

Source: FinPro, KB Securities Vietnam

Hanoi – Net foreign buys/sells

Ticker	Chg (%)	For. own (%,-1d)	Net buy (VND bn)
IDC	-8.1%	1.3%	1.3
IVS	-2.3%	70.6%	1.1
TA9	7.5%	8.5%	0.6
GLT	9.2%	3.7%	0.4
PVC	1.7%	0.7%	0.3
Ticker	Chg (%)	For. own (%,-1d)	Net sell (VND bn)
SHS	-4.7%	8.2%	-3.1
BCC	-2.2%	1.8%	-0.6
TNG	5.1%	1.9%	-0.5
THD	-1.9%	1.5%	-0.2
CLH	1.1%	3.0%	-0.1

Source: FinPro, KB Securities Vietnam

Sectors – Top 5 best/worst weekly performance

Top 5 best performers	Chg (%)	Key stocks
Retail	6.2%	MWG, FRT
Chemicals	5.6%	DGC, GVR
Technology	5.0%	FPT, CMG
Insurance	4.5%	BVH, MIG
Personal & Household Goods	3.8%	PNJ, GIL
Top 5 worst performers	Chg (%)	Key stocks
Financial Services	-5.5%	SSI, VCI
Construction & Materials	-4.5%	VCG, VGC
Basic Resources	-3.9%	HPG, NKG
Banks	-3.8%	VCB, BID
Real Estate	-2.8%	VHM, DIG

Source: Bloomberg, KB Securities Vietnam

Sectors – Top 5 best/worst monthly performance

Top 5 best performers	Chg (%)	Key stocks
Retail	18.5%	MWG, DGW
Technology	16.9%	FPT, CMG
Insurance	16.8%	BVH, MIG
Personal & Household Goods	10.4%	PNJ, MSH
Chemicals	8.9%	DGC, GVR
Top 5 worst performers	Chg (%)	Key stocks
Media	-9.1%	YEG, ADG
Travel & Leisure	-7.1%	VJC, HVN
Automobiles & Parts	-6.2%	TCH, HHS
Construction & Materials	-5.9%	VCG, ROS
Financial Services	-5.6%	SSI, VCI

Source: Bloomberg, KB Securities Vietnam

Vietnam – Focus stocks

Sector	Code	Company name	Price	Mkt cap (VNDbn, USDmn)	Trading value (VNDmn, USDmn)	For avail (% -1d)	P/E(X)		EPS CAGR (%)	ROE(%)		P/B(X)		Performance(%)			
							20E	21E		20E	21E	20E	21E	1D	1W	1M	YTD
Real estate	VIC	VINGROUP JSC	97,778	372,067 (16,170)	242,158 (10.6)	22.5	74.1	39.7	14.7	4.4	7.3	3.0	2.8	-1.2	1.5	3.1	-15.1
	VHM	VINHOMES JSC	79,385	339,478 (14,753)	299,972 (13.1)	26.6	8.6	7.4	35.9	24.6	22.7	1.9	1.6	-1.7	-5.2	-4.6	-13.3
	VRE	VINCOM RETAIL JS	34,850	79,190 (3,442)	126,581 (5.5)	17.8	28.3	18.3	-7.6	9.0	11.6	2.2	2.0	-1.1	-3.5	-0.8	4.7
	NVL	NOVA LAND INVES	45,853	86,712 (3,768)	455,049 (19.9)	31.3	29.2	19.1	6.7	15.2	18.7	3.9	3.2	-1.1	-0.6	9.8	-7.6
	KDH	KHANGDIENHOUSE	31,182	19,167 (833)	61,575 (2.7)	11.6	22.5	18.1	13.7	13.7	14.4	2.6	2.3	-1.2	-3.1	-1.0	-2.9
	DXG	DATXANH GROUP	21,130	12,594 (547)	544,296 (23.8)	13.9	16.4	8.0	-	15.0	12.4	1.8	2.2	-5.7	-9.6	-6.6	7.1
Banks	VCB	BANK FOR FOREIGN	79,937	378,305 (16,441)	78,370 (3.4)	6.3	14.2	11.6	11.7	20.9	21.7	2.7	2.3	-1.0	-3.4	-1.1	1.8
	BID	BANK FOR INVESTM	34,507	174,556 (7,586)	111,352 (4.9)	12.7	14.8	10.7	-5.3	17.2	20.2	2.1	1.7	-3.0	-8.7	-6.7	5.9
	TCB	VIETNAM TECHNOLO	38,900	136,341 (5,925)	313,194 (13.7)	0.0	7.4	6.1	14.3	21.0	20.6	1.4	1.1	-3.6	-7.5	-6.2	-8.8
	CTG	VIETNAM JS COMM	28,512	137,021 (5,955)	171,268 (7.5)	1.4	7.6	6.3	50.3	20.1	20.9	1.3	1.2	-0.6	-4.8	-3.0	-8.6
	VPB	VIETNAM PROSPERI	22,944	101,381 (4,406)	695,603 (30.4)	0.0	11.7	9.4	18.8	16.2	16.9	1.8	1.5	-2.5	-3.3	4.3	7.5
	MBB	MILITARYCOMMERC	19,407	73,327 (3,187)	424,088 (18.5)	0.0	7.7	6.2	14.6	24.1	23.4	1.6	1.3	-2.8	-6.8	-0.6	8.7
	HDB	HDBANK	20,400	40,641 (1,766)	105,632 (4.6)	4.2	7.3	6.0	23.3	21.8	21.1	-	-	-3.7	-9.0	-3.3	-14.7
	STB	SACOMBANK	18,600	33,548 (1,458)	445,153 (19.5)	14.0	13.1	7.7	26.5	13.9	17.8	1.5	1.3	-2.3	-5.6	-8.0	-4.4
	TPB	TIEN PHONG COMME	20,630	28,732 (1,249)	184,949 (8.1)	0.0	8.8	7.1	37.4	23.0	22.6	1.8	1.5	-4.4	-8.9	-6.4	-9.0
	EIB	VIETNAM EXPORT-I	18,500	22,745 (988)	19,519 (0.9)	0.2	-	-	27.3	-	-	-	-	-1.5	-7.6	-10.0	-1.2
Insurance	BVH	BAOVIETHOLDING	61,900	45,950 (1,997)	98,782 (4.3)	21.0	22.4	19.3	15.8	10.2	11.1	2.2	2.0	6.9	3.7	21.2	19.3
	BMI	BAOMINHINSURANC	22,250	2,439 (106)	33,139 (1.4)	14.2	39.9	18.1	9.1	11.6	13.5	4.4	2.0	5.1	-2.8	7.0	-5.0
Securities	SSI	SSI SECURITIES C	21,998	19,947 (867)	323,806 (14.2)	55.4	17.9	16.8	-3.2	15.2	15.2	-	-	-4.8	-9.2	-7.6	-22.8
	VCI	VIETCAPITAL SEC	27,500	9,108 (396)	121,871 (5.3)	71.9	-	-	-4.0	-	-	-	-	-6.0	-12.6	-14.1	-31.3
	HCM	HOCHIMINH CITY	22,265	8,907 (387)	110,572 (4.8)	52.4	-	-	-19.0	-	-	-	-	-4.7	-12.4	-12.4	-33.0
	VND	VNDIRECT SECURIT	6,983	5,734 (249)	397,443 (17.4)	27.2	-	-	36.3	-	-	-	-	-2.5	-3.7	3.4	1.3
Consumer staples	VNM	VIETNAM DAIRYP	109,000	227,805 (9,900)	241,787 (10.6)	42.1	16.0	14.7	4.0	30.9	32.9	4.6	4.4	0.3	-2.5	-0.9	-11.5
	SAB	SAIGON BEER ALCO	192,500	123,447 (5,365)	24,205 (1.1)	36.9	25.3	20.9	7.3	19.6	21.4	4.6	4.1	1.0	1.3	11.4	11.7
	MSN	MASANGROUP CORP	79,250	111,712 (4,855)	142,086 (6.2)	16.5	33.2	24.2	-51.9	17.9	22.6	5.6	4.5	-0.6	-0.7	6.3	-12.3
	HNG	HOANGANH GIA LA	12,450	13,801 (600)	119,451 (5.2)	48.8	-	-	-	-	-	-	-	-0.2	-8.4	-2.4	-24.1
Industrials (transport)	VJC	VIETJET AVIATION	131,800	69,042 (3,001)	121,765 (5.3)	11.0	118.3	23.8	-88.5	6.8	19.8	-	-	-0.7	-0.8	-8.2	5.9
	GMD	GEMADEPT CORP	33,100	9,976 (434)	175,043 (7.7)	10.8	23.7	20.8	-57.0	12.2	13.6	2.6	2.5	1.4	2.0	9.4	21.1
	CII	HOCHIMINH CITY	22,600	5,398 (235)	255,295 (11.2)	38.4	10.4	13.6	65.7	14.1	9.3	1.4	1.4	2.1	-6.0	-2.8	-36.2
Industrials (capital goods)	ROS	FLC FAROS CONSTR	3,670	2,083 (091)	142,378 (6.2)	46.4	-	-	-92.4	-	-	-	-	-6.9	-17.6	-37.2	-63.2
	GEX	GELEXGROUP JSC	15,802	10,411 (452)	620,447 (27.1)	37.7	-	-	-14.4	-	-	-	-	-5.7	-7.2	-10.3	-16.5
	CTD	COTECCONS CONSTR	73,200	5,438 (236)	94,824 (4.1)	3.6	14.8	11.0	-52.4	4.2	5.4	0.6	0.6	-6.9	-18.8	-20.1	-36.3
	REE	REE	59,600	18,419 (800)	74,406 (3.3)	0.0	13.7	11.3	-4.5	13.8	14.4	1.8	1.6	6.1	7.4	20.8	25.9

Source: Bloomberg, KB Securities Vietnam

Vietnam – Focus stocks

Sector	Code	Company name	Price	Mkt cap (VNDbn, USDmn)	Trading value (VNDmn, USDmn)	For avail (%, -1d)	P/E (X)		EPS CAG R (%)	ROE (%)		P/B (X)		Performance (%)			
							20E	21E		20E	21E	20E	21E	1D	1W	1M	YTD
Utilities	GAS	PETROVIETNAM GAS	90,100	172,447 (7,494)	73,946 (3.2)	46.1	19.0	17.6	-17.5	20.5	19.5	3.9	3.7	3.1	2.0	6.6	19.6
	NT2	PETROVIETNAM NHO	22,850	6,578 (286)	21,449 (0.9)	31.4	12.7	10.2	-10.5	14.3	15.8	1.6	1.5	3.0	-1.0	5.1	-9.7
	PPC	PHA LAI THERMAL	26,200	8,400 (365)	2,794 (0.1)	34.1	15.1	9.4	-5.1	10.1	17.3	1.3	1.3	-1.2	-4.8	-5.2	-13.3
Materials	HPG	HOA PHAT GRP JSC	32,481	145,287 (6,314)	760,601 (33.3)	18.0	6.9	6.6	21.9	29.9	23.1	1.7	1.3	-1.6	-5.0	-4.2	-4.7
	DPM	PETROVIETNAM FER	17,400	6,809 (296)	451,640 (19.7)	36.5	8.5	17.8	-0.5	32.8	17.8	2.7	3.6	-2.1	9.3	13.5	41.4
	DCM	PETROCA MAU FER	13,650	7,226 (314)	333,979 (14.6)	46.5	9.3	13.7	-4.5	29.9	17.6	2.4	2.2	-2.1	3.6	-0.1	16.5
	HSG	HOA SEN GROUP	22,636	11,063 (481)	315,599 (13.8)	38.9	5.3	6.1	67.9	24.0	19.9	1.2	1.0	0.0	-5.9	-10.8	-11.2
	AAA	ANPHAT BIOPLAST	12,864	3,138 (136)	118,593 (5.2)	97.2	16.5	16.5	17.2	7.0	-	1.1	1.1	-1.7	-3.4	-2.6	-16.3
Energy	PLX	VIETNAM NATIONAL	56,100	68,375 (2,972)	88,554 (3.9)	4.6	20.1	16.0	-51.0	14.1	15.9	2.1	2.0	0.0	-3.4	-2.3	1.5
	PVD	PETROVIETNAM DRI	23,400	9,854 (428)	189,584 (8.3)	39.9	31.9	15.0	-11.9	3.3	5.9	0.9	0.9	-0.2	-8.9	-16.0	2.0
	PVT	PETROVIET TRANSP	17,900	5,793 (252)	98,300 (4.3)	35.9	8.8	7.6	2.2	16.5	16.4	1.3	1.1	-1.3	-4.9	-7.8	-2.5
Consumer discretionary	MWG	MOBILEWORLD INV	93,000	65,024 (2,826)	310,970 (13.6)	0.0	17.8	14.9	14.4	28.1	28.0	4.7	4.0	0.4	3.4	21.9	17.9
	PNJ	PHU NHUAN JEWELR	87,500	19,895 (865)	118,832 (5.2)	0.0	20.0	16.3	2.4	20.9	20.8	3.6	3.0	0.1	1.7	13.8	21.7
	YEG	YEAH1 GROUP CORP	40,300	1,261 (055)	11,462 (0.5)	70.6	-	-	-	-	-	-	-	1.7	-6.0	-13.0	-7.8
	FRT	FPT DIGITAL RETA	28,200	2,227 (097)	143,438 (6.3)	30.3	20.9	17.6	-75.2	29.7	27.6	5.9	4.5	-0.5	8.2	29.0	64.2
	PHR	PHUOC HOA RUBBER	61,900	8,387 (365)	57,845 (2.5)	34.6	11.5	13.0	41.2	35.0	25.3	3.3	2.8	6.9	10.8	14.2	21.0
Healthcare	DHG	DHG PHARMACEUTIC	100,300	13,114 (570)	3,314 (0.1)	45.4	16.9	15.6	10.7	20.1	19.9	3.1	2.9	-0.2	-4.5	-6.3	-9.8
	PME	PYMEPHARCO JSC	80,200	6,016 (261)	#N/A (#N/A)	11.7	-	-	1.6	-	-	-	-	-	-	-	-
IT	FPT	FPT CORP	68,000	61,301 (2,664)	318,669 (13.9)	0.0	20.7	16.6	15.5	27.3	29.5	5.0	4.3	-1.4	1.5	26.4	23.7

Source: Bloomberg, KB Securities Vietnam

KB SECURITIES VIETNAM RESEARCH

Nguyen Xuan Binh
Head of Research
binhnx@kbsec.com.vn

Equity

Duong Duc Hieu
Head of Equity Research
hieudd@kbsec.com.vn

Nguyen Anh Tung
Senior Analyst – Financials & Information technology
tungna@kbsec.com.vn

Pham Hoang Bao Nga
Senior Analyst – Property
ngaphb@kbsec.com.vn

Le Anh Tung
Senior Analyst – Oil & Gas & Banks
tungla@kbsec.com.vn

Nguyen Ngoc Hieu
Analyst – Power & Construction Materials
hieunn@kbsec.com.vn

Tieu Phan Thanh Quang
Analyst – Industrial Real Estate & Logistics
quangtpt@kbsec.com.vn

Luong Ngoc Tuan Dung
Analyst – Consumers & Retailing
dunglnt@kbsec.com.vn

Research Division
research@kbsec.com.vn

Macro/Strategy

Tran Duc Anh
Head of Macro & Strategy
anhtd@kbsec.com.vn

Le Hanh Quyen
Analyst – Macroeconomics & Banks
quyenlh@kbsec.com.vn

Thai Huu Cong
Analyst – Strategy & Mid cap Stocks
congth@kbsec.com.vn

Tran Thi Phuong Anh
Analyst – Strategy & Mid cap Stocks
anhttp@kbsec.com.vn

Support team

Nguyen Cam Tho
Assistant
thonc@kbsec.com.vn

Nguyen Thi Huong
Assistant
huongnt3@kbsec.com.vn

KB SECURITIES VIETNAM (KBSV)

Head Office:

Levels G, M, 2 & 7, Sky City Tower, 88 Lang Ha Street, Dong Da District, Hanoi, Vietnam

Tel: (+84) 24 7303 5333 – Fax: (+84) 24 3776 5928

Hanoi Branch:

Level 1, VP Building, 5 Dien Bien Phu, Ba Dinh District, Hanoi, Vietnam

Tel: (+84) 24 7305 3335 – Fax: (+84) 24 3822 3131

Ho Chi Minh Branch:

Level 2, TNR Tower Nguyen Cong Tru, 180-192 Nguyen Cong Tru Street, District 1, HCMC, Vietnam

Tel: (+84) 28 7303 5333 – Fax: (+84) 28 3914 1969

Saigon Branch:

Level 1, Saigon Trade Center, 37 Ton Duc Thang, Ben Nghe Ward, District 1, HCMC, Vietnam

Tel: (+84) 28 7306 3338 – Fax: (+84) 28 3910 1611

CONTACT INFORMATION

Institutional Client Center: (+84) 28 7303 5333 – Ext: 2656

Private Customer Care Center: (+84) 24 7303 5333 – Ext: 2276

Email: ccc@kbsec.com.vn

Website: www.kbsec.com.vn

Investment ratings & definitions

Investment Ratings for Stocks

(based on expectations for absolute price gains over the next 6 months)

Buy:	Hold:	Sell:
+15% or more	+15% to -15%	-15% or more

Investment Ratings for Sectors

(based on expectations for absolute price gains over the next 6 months)

Positive:	Neutral:	Negative:
Outperform the market	Perform in line with the market	Underperform the market

Opinions in this report reflect the professional judgment of the research analyst(s) as of the date hereof and are based on information and data obtained from sources that KBSV considers reliable. KBSV makes no representation that the information and data are accurate or complete and the views presented in this report are subject to change without prior notification. Clients should independently consider their own particular circumstances and objectives and are solely responsible for their investment decisions and we shall not have liability for investments or results thereof. These materials are the copyright of KBSV and may not be reproduced, redistributed or modified without the prior written consent of KBSV. Comments and views in this report are of a general nature and intended for reference only and not authorized for use for any other purpose.